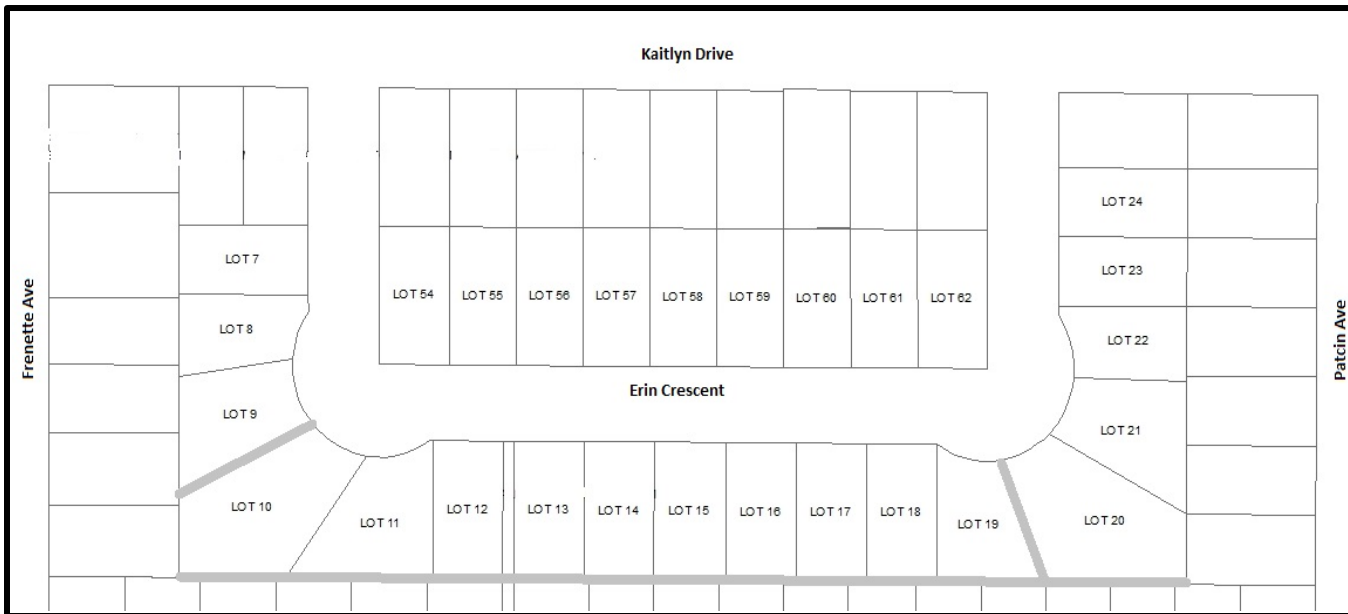


# ERIN CRESCENT SUBDIVISION

## RESIDENTIAL LOTS - FOR SALE



### LOT PRICES

Lot 22	\$	63,900.00
Lot 8	\$	64,900.00
Lots 7, 23, 24	\$	65,900.00
Lots 55 - 61	\$	67,800.00
Lots 12 - 18, 54, 62	\$	70,800.00
Lot 19	\$	78,600.00
Lot 9	\$	82,600.00
Lot 21	\$	89,500.00
Lot 11	\$	98,300.00
Lot 10	\$	110,400.00
Lot 20	\$	115,200.00

\*easement along South side of lots 10-20

\*easement between lots 9 and 10

\*easement between lots 19 and 20

\*prices above do not include HST

CONTACT:

Elizabeth (Lisa) Slomke, AOMC

Municipal Clerk

807-274-5323, Extension 1215

[lslomke@fortfrances.ca](mailto:lslomke@fortfrances.ca)



[www.fortfrances.ca](http://www.fortfrances.ca)